

2026  
PRODUCT  
CATALOGUE

# LIQUOR SHELVING





# LIQUOR SHELVING

Gibson's URI and SYS70 shelving systems are trusted by Australia's leading liquor retailers to deliver strong, reliable and flexible store solutions.

Designed for both shop floors and cool rooms, these heavy-duty systems offer tool-free assembly and adjustable configurations to suit any retail layout.

With a wide range of accessories and finishes available, you can create a clean, modern look that enhances your product display and leaves a lasting impression.

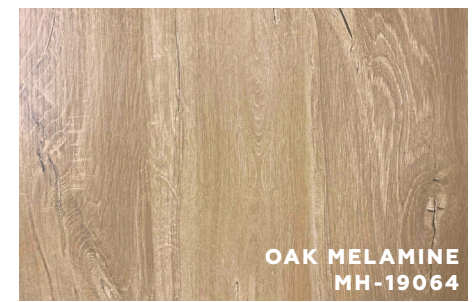
# TABLE OF CONTENTS

Introduction	2
Table of Contents	3
URI Heavy Duty Shelving	4
System 70 Liquor Shelving	16
Liquor Counters	22
Liquor Displays	28

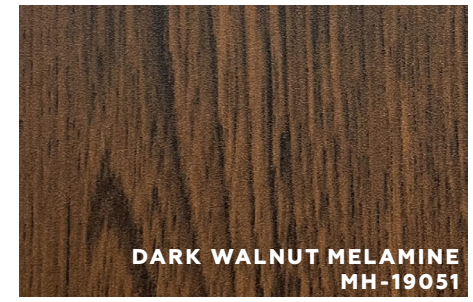


# URI HEAVY DUTY SHELVING

## Standard Finishes Options:

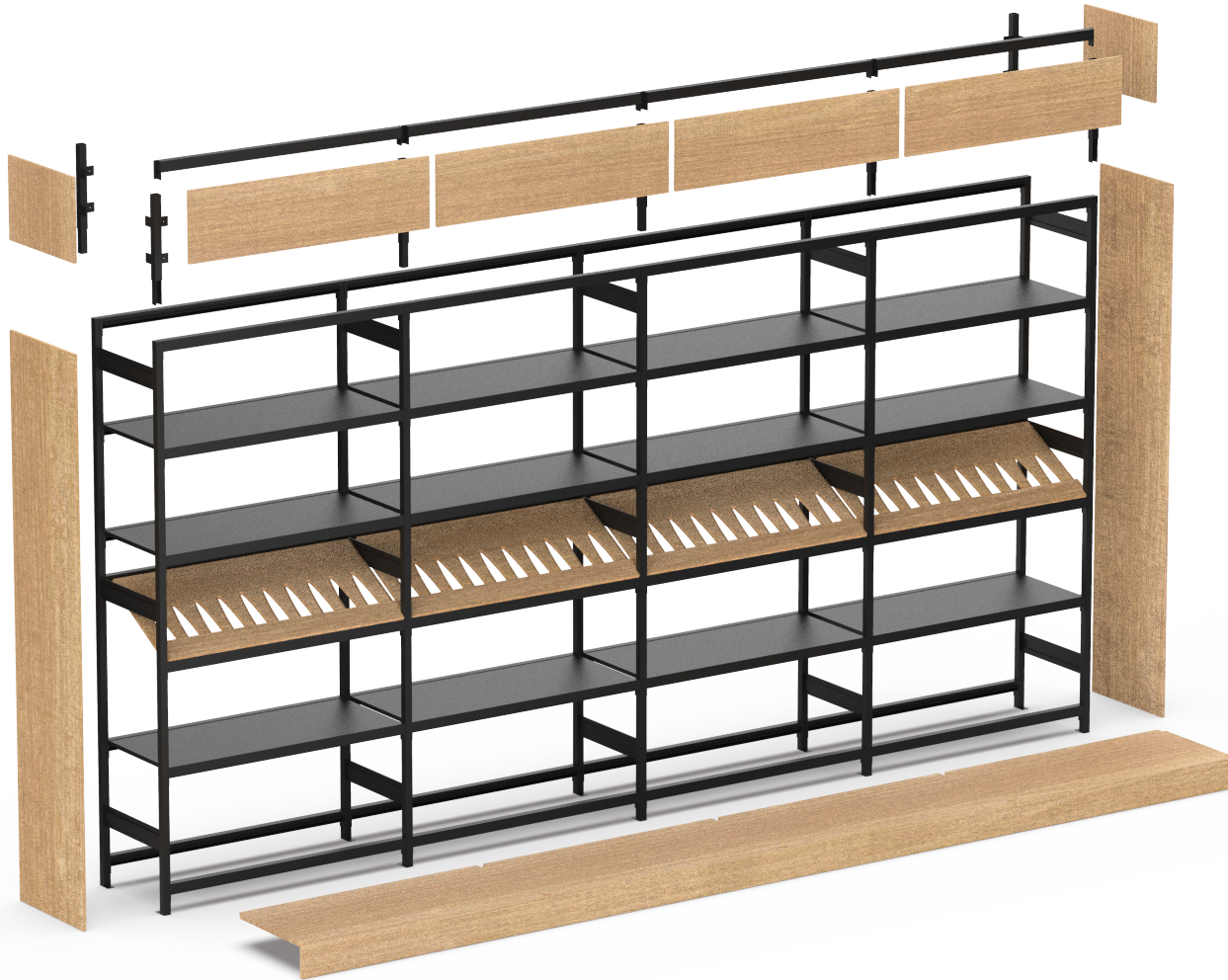


## Made to Oder Finishes Options:



# TRUSTED BY RETAILERS. BUILT FOR GROWTH.

Designed in Australia and trusted by major liquor retailers for over 90 years, URI shelving is built to handle heavier loads than traditional cantilever systems. Ideal for sales floors or cool room storage, it features adjustable shelves and tool-free assembly. A wide range of sizes and accessories allows for flexible layouts and a contemporary finish.





### **URI Low Height 1495h**

Heavy-duty modular liquor shelving with a powder-coated frame and adjustable shelves. Ideal for under-window displays, open sight lines, and feature ends. Available in 600, 915, 1010, and 1200mm bays.

*Size: 610mm (d) x 1495mm (h)*

*505mm deep frames also available upon request.*

### **URI Mid Height 1800h**

Heavy-duty modular liquor shelving with a powder-coated frame and adjustable shelves. Ideal for under-window displays, open sight lines, and feature ends. Available in 600 and 1200mm bays.

*Size: 505mm (d) x 1800mm (h)*





### URI Full Height 2400h

Heavy-duty modular liquor shelving with a powder-coated frame and adjustable shelves. Ideal for under-window displays, open sight lines, and feature ends. Available in 600, 915 and 1200mm bays.

Size: 610mm (d) x 2400mm (h)

505mm deep frames also available upon request.

### URI Feature End

A heavy-duty modular end frame designed to complete double-sided liquor shelving rows. Powder-coated for durability and compatible with standard URI shelving components.

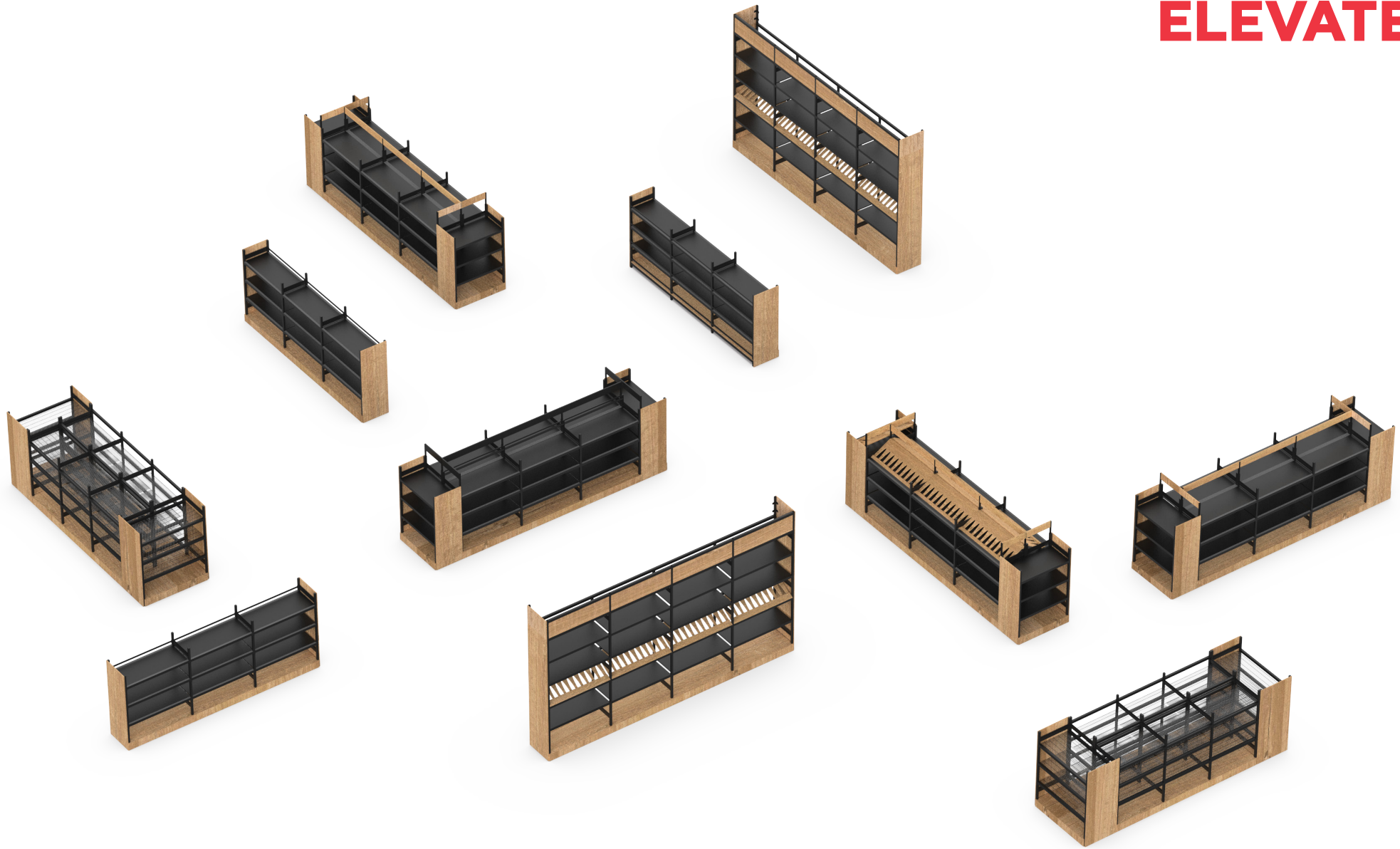
Ideal for creating standout feature displays at the end of aisles.

Available in 1495h, 1800h, and 2400h to suit all standard URI shelving heights.

Size: 1200mm (w) x 610mm (d)



# SKINS THAT ELEVATE



## Base Shelves

Durable base shelves designed to complement URI systems. Available in timber for a warm, premium look that enhances your overall display.

Available in all standard bay sizes: 600, 915, 1010, and 1200mm.



## End Gable Panels

Durable end panels designed to finish off URI shelving units with style. Available in timber for a warm look or black sheet metal for a modern finish.

Available in all standard heights: 1495h, 1800h, and 2400h.

Mounting Brackets required

## Pelmets

Finishing panels to complement your URI shelving setup. Ideal to use as signage panel for branding or product categories.

Available in all standard bay widths: 915, and 1200mm.

Product Code: 2464 (915 Pelmet)

Product Code: 1327 (1200 Pelmet)

Product Code: 2464 (Side Panel)

Product Code: 921-220 (Extension)

Product Code: 921-221 (Corner Pair)





### Overhead Storage Box

A practical add-on to sit above the top shelf of URI shelving, providing additional storage without compromising display space.

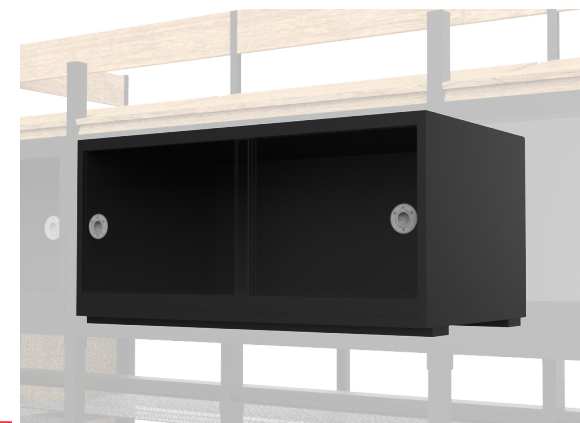
Suits all standard bay widths: 600, 915, 1010, and 1200mm.

- Product Code: 1265 (600 bay)
- Product Code: 1264 (915 bay)
- Product Code: 1268 (1010 bay)
- Product Code: 1267 (1200 bay)

### Lockable Cabinet

An add-on that goes onto URI shelving, providing a secure and attractive display cabinet. Perfect for showcasing and protecting high value items

Product Code: 2463 (Suits 1200 Bay Only)

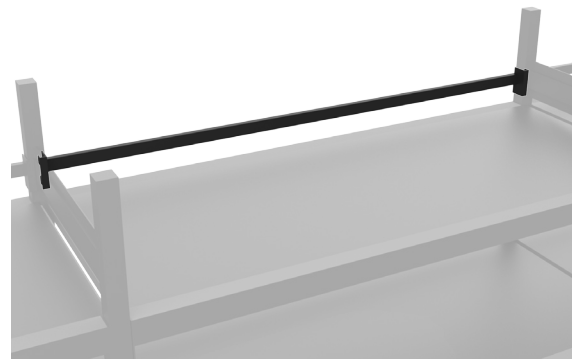


### Back Stop Rail

A practical accessory that attaches to the back of the unit to prevent stock from sliding or being pushed beyond the rear.

Helps maintain neat, secure product displays.

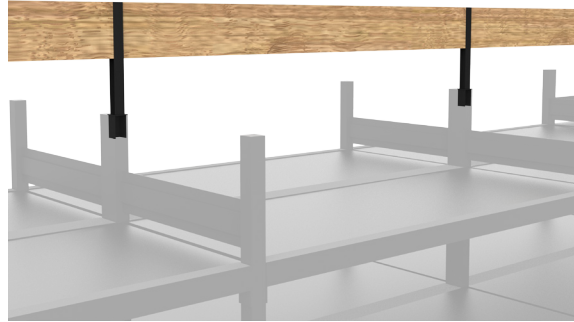
- Product Code: 809-515 (600 bay)
- Product Code: 809-628 (915 bay)
- Product Code: 809-514 (1200 bay)



## Signage Blades

Slots into the top of URI frames to provide clear and visible signage. Ideal for highlighting product categories or promotions. Available in timber and black finishes to suit your store style.

Product Code: 1268 (1010 bay)  
Product Code: 1267 (1200 bay)  
Product Code: 1692 (Signage Post)



## Angled Shelving

Angled wine display shelf designed to sit securely on standard URI rails. Perfect for showcasing wine labels at an ideal viewing angle while holding up to 10 bottles.

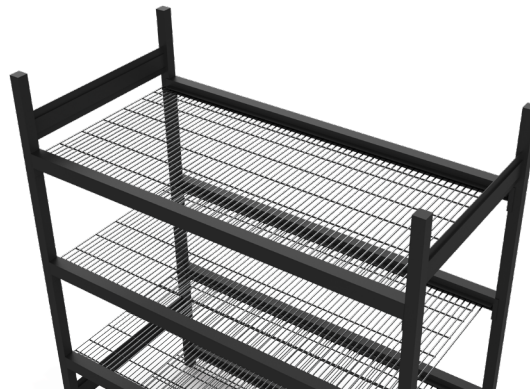
A clean, organised solution for premium product presentation.

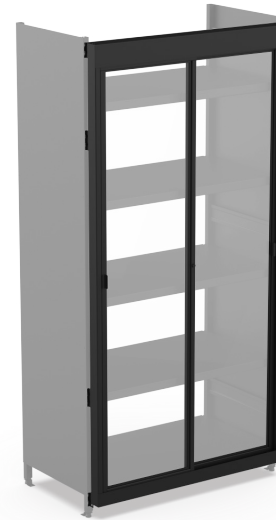
Product Code: 2485 (Suits 1200 Bay Only)

## Wire Shelf

A stylish alternative to standard steel or melamine shelf panels. Offering an easy to maintain surface, ideal for creating a modern, minimalist liquor display while maintaining full compatibility with URI shelving.

Product Code: 2456 (600 bay)  
Product Code: 921-076 (915 bay)  
Product Code: 921-206 (1200 bay)





### Sliding Door with Lock – 1200mm URI Bay

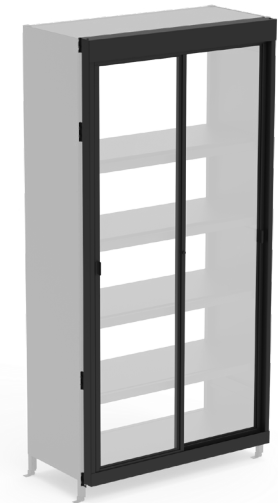
Secure your 2400mm high URI bays with this 1200mm acrylic sliding door and lock set, ideal for safeguarding premium wines, spirits, and other high-value liquor products in retail or bottle shop environments.

*Product Code: 1705*

### Sliding Door with Lock – 915mm URI Bay

Protect high-value liquor stock with this 915mm acrylic sliding door and lock set, designed for 2400mm high URI bays. Perfect for securing premium spirits, limited-edition releases, and other sought-after bottles.

*Product Code: 1125*



# URI FULL WALL DISPLAY



Dress up a full-height URI unit to create an eye-catching liquor wall display. We can customise all components to suit your space.

Start with a URI full-height unit and choose from 1200mm or 600mm modules depending on your layout.

Elevate your display with a range of skins tailored to your requirements, including:

- End panel timber finishes
- Pelmet panels
- Angled bottle display shelves

Optional Add-On: Integrated LED Lighting  
Enhance product visibility and create a premium shopping experience with under-shelf LED lighting.

Ideal for highlighting featured products and improving overall store ambience.



### Set A

A compact, heavy-duty display setup designed for feature ends or mid-floor use. Includes a sturdy table base shelf, end panels for a finished look, and a back stop to keep products securely in place.

Perfect for showcasing promotional or high-rotation liquor products in a clean, accessible format.

*3 x 1200mm bay single sided low height configuration with timber skin shown.*

*Size: 3600mm (w) x 600mm (d) x 1495mm (h)*

### Set B

A premium 3-bay double-sided shelving setup with integrated feature ends for high-impact, in-aisle displays. Includes end gables, timber base shelves for a refined finish, and signage blades for clear product or category messaging.

Ideal for central floor placement, combining durability with strong visual appeal.

*3 x 915mm bay double sided low height feature end configuration with timber skin and signage shown.*

*Size: 4040mm (w) x 1200m (d) x 1495mm (h)*



**Set D**

A standout 3-bay double-sided display featuring signage blades for clear branding and navigation.

Includes end gables, timber base shelves for a warm, premium finish, and angled wine display shelves to showcase bottles with maximum label visibility.

Ideal for highlighting wine ranges in high-traffic areas.

*3 x 1200mm bay double sided low height feature end configuration with timber skin, signage and angled wine display shown.*

*Size: 4800mm (w), 1200mm (d), 1495mm (h)*

**Set C**

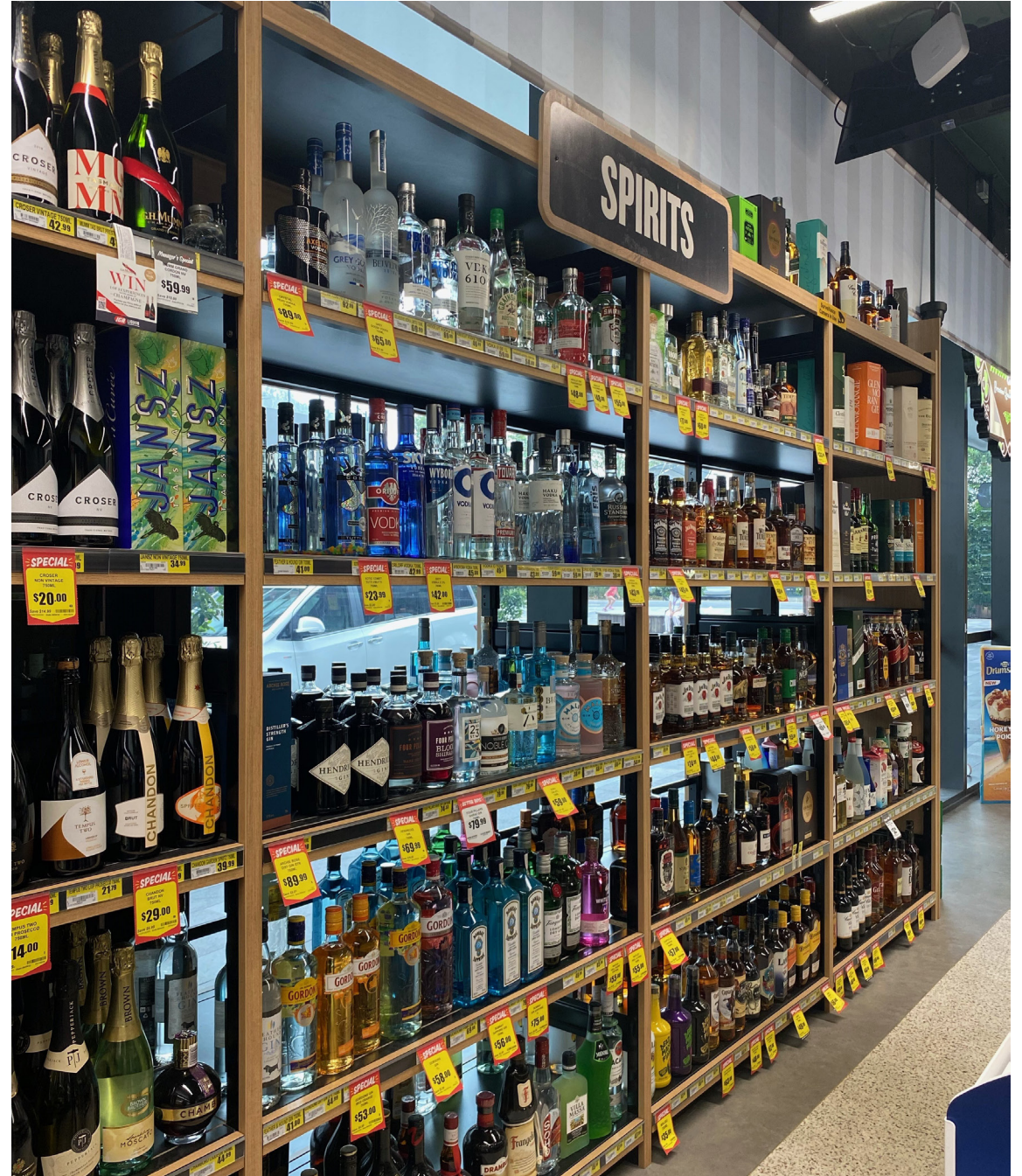
A stylish 3-bay double-sided display with feature ends, designed to elevate your liquor presentation.

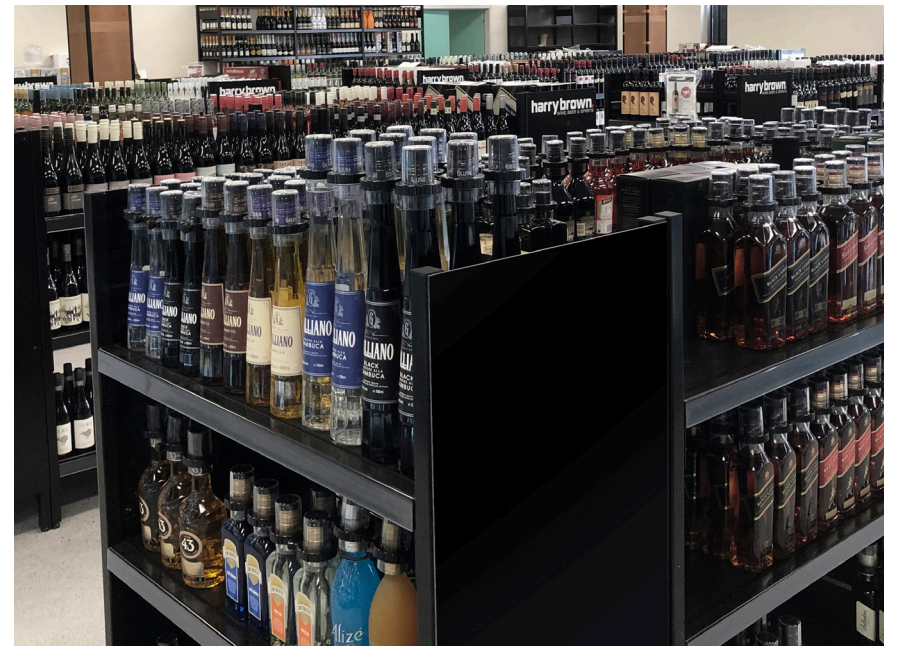
Includes end gables, timber base shelves for a premium foundation, and wire shelves for a lighter, open-look aesthetic.

Ideal for mid-floor use where both visibility and design impact matter.

*3 x 915mm bay double sided low height feature end configuration with timber skin and wire shelf shown.*

*Size: 4040mm(w) x 1200mm (d) x 1495mm (h)*







# SYS70 LIQUOR SHELVING

## Standard Finishes Options:

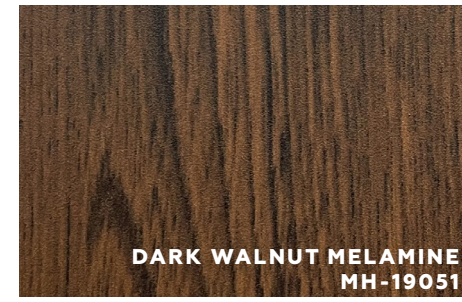


OAK MELAMINE  
MH-19064



SATIN BLACK  
POWDERCOAT

## Made to Oder Finishes Options:



DARK WALNUT MELAMINE  
MH-19051



GREY OAK MELAMINE  
MH-19073

# THE DISPLAY STANDARD IN LIQUOR RETAIL



Our SYS70 range of shelving has been tried and tested across supermarkets and liquor stores for almost 100 years. SYS70 heavy duty cantilever shelving offers maximum flexibility and support to create an effective liquor display. Select the perfect display for your store in a few easy steps. Elevate your presentation by dressing up SYS70 shelving with our versatile range of skins.



### Single Sided Gondola

A versatile wall or perimeter display solution designed for liquor and grocery retail. The single sided gondola offers sturdy support with adjustable shelves and high load capacity.

Ideal for wall runs or narrow aisles, with customisable finishes to suit your store aesthetic.

*Size: 915mm bays(w) x 470mm (d) x 1495mm (h)*

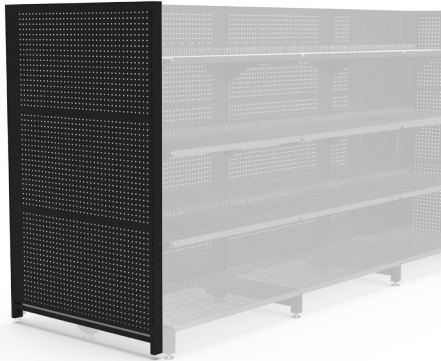
### Double Sided Gondola

A durable, freestanding double sided unit built for high-traffic retail environments.

Perfect for mid-floor placement, it provides ample display space on both sides with strong shelf support and flexible configurations. Available in a range of finishes and sizes to match your store layout and branding.

*Size: 915mm bays(w) x 1010mm (d) x 1495mm (h)*





### Feature End Frame with Punch Panel

A functional feature end fitted with a perforated punch panel to suit hangsell hooks and accessories. Ideal for highlighting promotional or high-turnover items at aisle ends.

Size: 930mm (w) x 1495mm (h)

### Feature End Frame with Shelving

Add merchandising power to aisle ends with a feature end frame fitted with adjustable shelving. Perfect for showcasing select product ranges or category highlights.

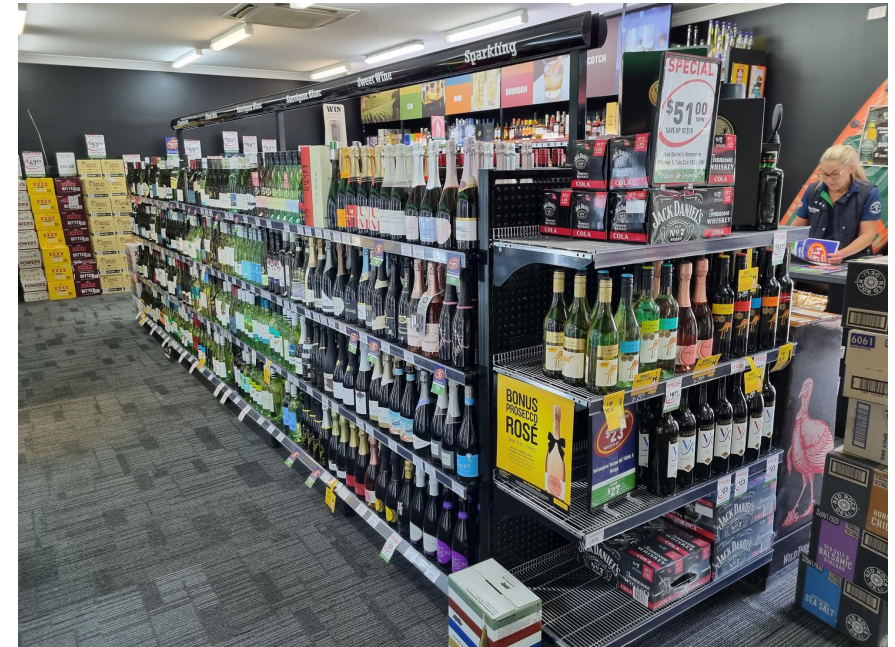
Size: 930mm (w) x 1495mm (h)

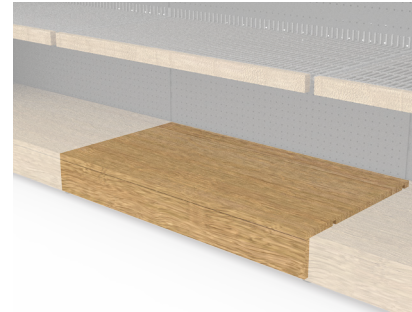


### Feature End Frame with Shelving + Base Shelf

Enhance your aisle end displays with a complete feature end unit, combining adjustable shelving and a durable base shelf. Great for structured product presentation and added storage at floor level.

Size: 955mm (w) x 1495mm (h)





### Base Shelf

Durable shelves designed to integrate seamlessly with System 70 shelving. Available in timber for a premium, natural look. Strong, reliable, and ideal for enhancing your display's foundation.

Product Code:

### Feature End Timber End cap

Timber end panel designed to attach to the side of a feature end or single sided gondola.

Includes additional shelving for extended product display and a premium, natural finish.



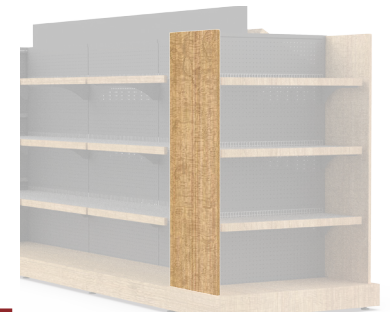
### Feature End Metal End cap

Metal end panel with integrated punch panels for hangsell hooks.

Attaches to the side of a feature end or single sided gondola, combining extra shelving with flexible hanging display options.

### End Gable Panels

Durable end panels designed to finish off System 70 shelving runs with a clean, professional look. Available in timber or black sheet metal to suit your store style.





### Angled Bottle Display

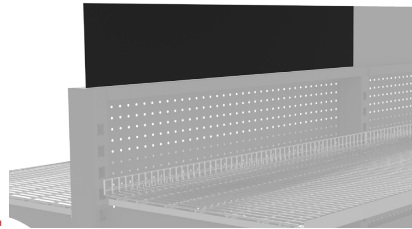
Angled display shelf designed to sit on standard System 70 rails, ideal for presenting wine and liquor at an optimal viewing angle.

A stylish and functional addition to elevate your product presentation.

### Signage Blade

A streamlined panel that slots into the top of each System 70 bay, ideal for clear category signage or branding.

Available in black metal or timber to match your store's look.



### Signage Arm

A signage option mounted above the shelving, perfect for clear overhead branding or category identification. Designed to draw attention from a distance and enhance in-store navigation.

### Trim Kit

Available in timber, this kit includes end panel gables, base shelves, and top cap trims for feature end frames.

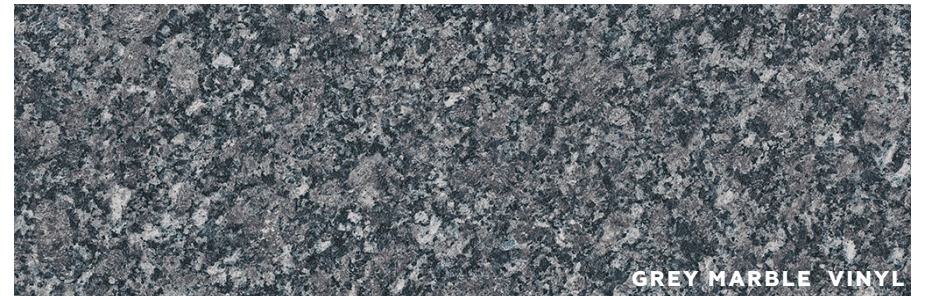
Includes timber shelf lips to complement chrome wire shelving for a polished finish.





# LIQUOR COUNTERS

Standard Finishes Options:



GREY MARBLE VINYL



CHARCOAL MELAMINE

# SMART, MODULAR CHECKOUT SOLUTIONS

Flexible checkout counters designed to suit any store layout. Choose from standard layouts of 2400mm, 3000mm or mix and match modules to create your own configuration. Options include LED shelving, snack displays, glass cabinets, drawers, cupboards, and more—combining efficiency with a premium finish.



## Bench Tops

Select from three bench top options to suit your store layout and equipment requirements. Each features a durable vinyl finish, built for daily use in high-traffic retail environments.



### 2400mm Bench Top

A practical solution for compact counters or stores with limited space. Offers enough room for essential checkout tasks while maintaining a smaller footprint.

Product Code: 708-1024 (Module K)

### 3000mm Bench Top

Ideal for larger checkouts requiring more working space. Provides ample room for POS equipment, bagging, and customer interaction.

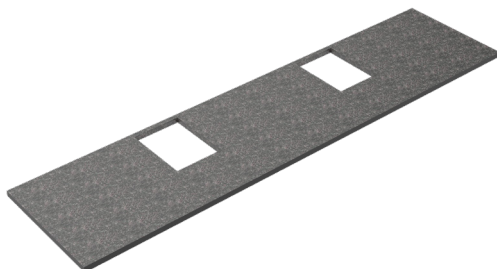
Product Code: 708-1025 (Module L)



### 3000mm Bench Top with Cut-Out

Includes a cut-out for integrated checkout screens or scanners, streamlining operations and improving customer flow.

Product Code: 708-2676 (Module P)



## Customer Side Modules

Elevate your checkout area with display modules designed to boost impulse sales and improve product presentation. These units integrate seamlessly with the bench system for a clean, functional setup.



### 1200mm Angled Shelving with LED

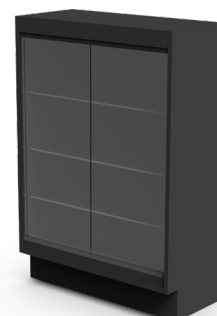
Perfect for seasonal or promo items, with angled shelves for visibility and LED lighting to highlight products.

Product Code: 708-1021 (Module H)

### 600mm Snack Shelving

Perfect for fast-moving items like snacks and confectionery. Encourages impulse buys and fits neatly within the checkout flow.

Product Code: 708-1018 (Module G)



### 600mm Glass Display Cabinet

A secure, premium display for high-value or delicate items. Clear glass panels provide visibility with a sleek, professional finish.

Product Code: 708-1022 (Module I)

## Operator Side Modules

Designed to support efficient checkout operations, these modules provide practical storage and workspace solutions for staff. Each unit integrates cleanly with the counter system for a professional, functional setup.



### 600mm Open Shelving

A versatile open unit ideal for storing packaging, bags, or frequently used supplies.

*Product Code: 708-1373 (Module A)*

### 600mm Two Door Cupboard

Provides enclosed, secure storage for tools, documents, or equipment. A clean and practical option for keeping the operator area tidy.

*Product Code: 708-1400 (Module B)*



### 600mm Drawer Unit

Includes multiple drawers for organised storage of smaller items such as POS supplies, stationery, or electronics.

*Product Code: 708-1408 (Module C)*



## Scanner / Scale Module

### 600mm Grooved Front Shelf Unit

Specifically designed to accommodate scanner and scale modules in cut-out bench tops, while still providing functional shelf space below for operator use.

*Product Code: 708-2675 (Module O)*

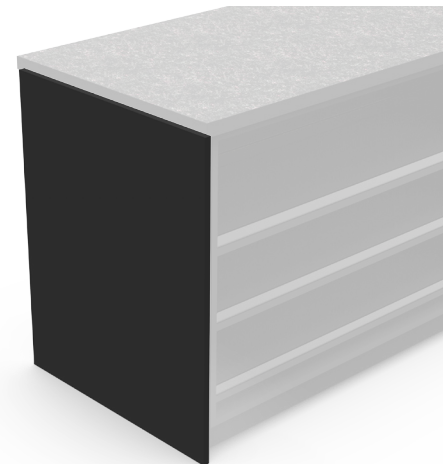


*Customer Side*



*Operator Side*

## Counter Top End Cheeks



### Counter Top End Cheeks

Finish off your checkout bench with clean, professional end cheeks for a polished look and added durability.

*Product Code: 708-1023 (Module J)*



Customer Side



Operator Side

### Set A - 2400mm

Compact checkout setup with a 2400mm bench top. Includes two 1200mm angled LED shelves (customer-facing), plus two 600mm open shelves, a 600mm two-door cupboard, and a 600mm drawer unit on the operator side. Ideal for efficient, organised spaces.

Size: 2400mm (w) x 748mm (d) x 935mm (h)

### Set B - 3000mm

3000mm bench setup designed to maximise display and storage. Customer side features a glass display cabinet and two 1200mm angled shelves with LED lighting to enhance product visibility. Operator side includes two 600mm two-door cupboards, two 600mm open shelving units and one 600mm drawer unit for practical, organised storage.

Size: 3000mm (w) x 748mm (d) x 935mm (h)



Customer Side



Operator Side



Customer Side

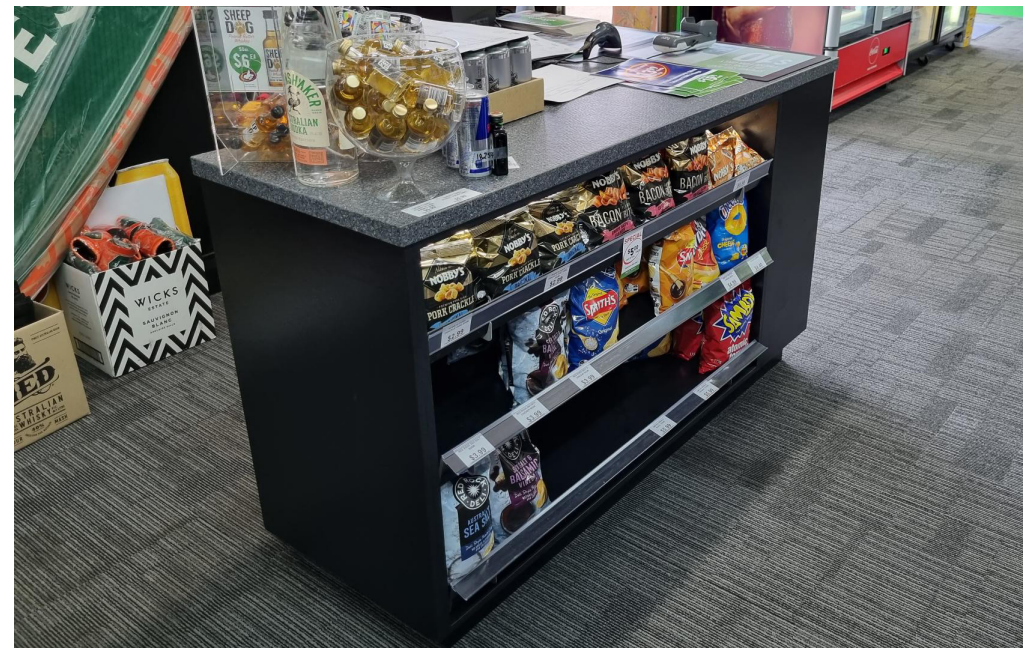


Operator Side

### Set C - 3000mm with Scanner/Scale Module

Customer side includes 3 × 600mm snack shelves for impulse buys. Operator side features 2 × 600mm grooved front units designed for integrated scanners or scales and three 600mm open shelving units. Ideal for high-traffic checkouts needing tech integration and strong product visibility.

Size: 3000mm (w) x 748mm (d) x 935mm (h)





# LIQUOR DISPLAYS

Gibson's URI and SYS70 shelving systems are trusted by Australia's leading liquor retailers to deliver strong, reliable and flexible store solutions.

Designed for both shop floors and cool rooms, these heavy-duty systems offer tool-free assembly and adjustable configurations to suit any retail layout.

With a wide range of accessories and finishes available, you can create a clean, modern look that enhances your product display and leaves a lasting impression.

## Rustic Display Table

A bold, eye-catching feature table perfect for showcasing wine, liquor, baked goods, or new product launches.

Crafted with a timber plywood finish, it includes four mobile shelving units and a signage gantry with S-hooks (signage board not included). Delivered fully assembled for immediate use in-store.

Size: 2000mm (w) x 1000mm (d) x 920mm (h)





## Adapt Tables



### Adapt Table Set A

A full-featured display solution with one large table and multiple nesting tables—great for creating layered, high-impact impulse zones. Ideal for stores needing adaptable, eye-catching merchandising.

### Adapt Table Set B

A balanced set of three tables offering height variation and compact flexibility. Perfect for highlighting key items in smaller display areas without overwhelming the space.



### Adapt Table Set C

A space-saving duo ideal for end-of-aisle or point-of-sale displays. Nesting design makes setup and storage simple while still drawing attention to featured products.

*Product Code: 708-307*



### Adapt Table A

A versatile square display table with a removable top that converts into a wire basket. Ideal as a feature piece for bakery, liquor, or seasonal promotions.

Size: 950 x 950 x 885mm(h)  
Product Code: 708-098/708-099 (Table/Basket)

### Adapt Table B

A mid-size rectangular table designed for versatile placement and nesting. Great for impulse items or layering product displays, with the option to add a wire basket for extra containment.

Size: 950 x 475 x 725mm(h)  
Product Code: 708-100



### Adapt Table A

A compact low-height table perfect for front-facing or nested displays. Use alone or with Table B to create dynamic, tiered setups for smaller items or promotional goods.

Size: 860 x 475 x 560mm(h)  
Product Code: 708-101



### Convert into Dump Bin Adapt Table A

When the tabletop is removed and slid beneath, the table transforms into a functional dump bin display, offering flexible retail presentation in a single footprint.



### Convert into Dump Bin Adapt Table B

The same wire basket is also compatible with the smaller Adapt Table B, allowing for versatile use across store formats.









*Have questions? We're happy to help!  
Contact us for more information, pricing,  
or to discuss your needs.*

**[www.gibsonretail.com.au](http://www.gibsonretail.com.au)**

**Head Office NSW**

4 Lidco St  
Arndell Park  
NSW 2148

Tel: 02 8724 4600  
Fax: 02 8724 4699

**VIC Office**

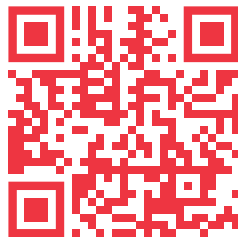
Level 7, 570  
St Kilda Rd  
Melbourne  
VIC 3004

Tel: 03 9545 3619

**Shanghai**

11F, Tower A,  
1308 Lianhua Rd  
Minhang District  
Shanghai China

Tel: +86 21 5223 0161



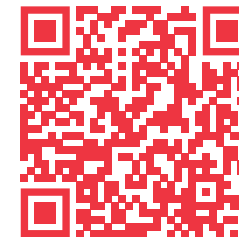
**WEBSITE**



**LINKEDIN**



**FACEBOOK**



**INSTAGRAM**