

2025  
PRODUCT  
CATALOGUE

# FRESH PRODUCE







# FLEXIBLE MODULAR DISPLAYS

Gibson are able to deliver a consistent and enticing 'fresh' offer that appeals to your customers.

Our modern, modular and smart fresh produce lounges, tables and accessories have been designed to entice customers to purchase, whilst at the same time, leave a positive lasting impression of your store.

We are continually sourcing the best equipment for your retail space and believe we have the solutions to grow your sales.



# TABLE OF CONTENTS

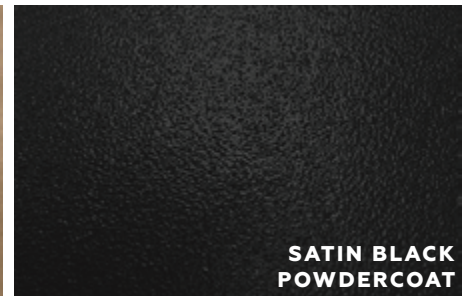
Introduction	2
Table of Contents	3
Produce Lounge	4
Produce Bins	12
Produce Tables	22



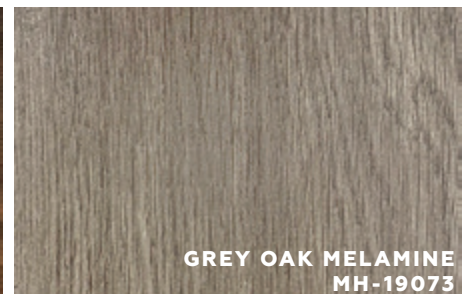
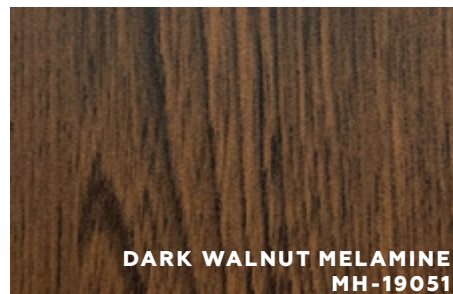


# PRODUCE LOUNGES

## Standard Finishes Options:



## Made to Oder Finishes Options:









# ENDLESS LOUNGE COMBINATIONS

The Phoenix range of produce lounges are designed for retailers that want a high quality and affordable fruit and vegetable display. Our modular produce lounges feature a sturdy steel frame and integrated hips and slopes. A simple and contemporary design that has been tested in supermarkets across Australia.

End Panel RH (708-112)

Shelf to Suit 900mm Produce Lounge (1674)

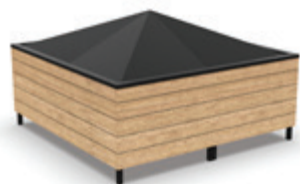
Shelf to Suit 1800mm Produce Lounge (1668)

End Panel LH (708-111)

Produce Lounge 900mm (708-108)

Produce Lounge 1800mm (708-110)

Produce Lounge End Bay (708-113)



### Produce Lounge - 1800 x 1800

Contemporary produce lounge complete with hips and corner protection trims. Sturdy metal frame and plank effect timber panels.

Size: 1800mm x 1800mm

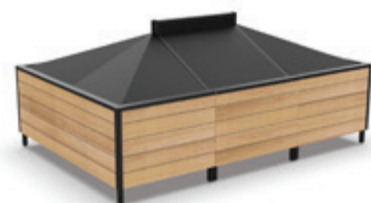
Product Code: TBA

### Produce Lounge - 2700 x 1800

Contemporary produce lounge complete with hips/slopes and corner protection trims. Sturdy metal frame and plank effect timber panels.

Size: 2700mm x 1800mm

Product Code: 708-309



Also available as 2400mm x 1600mm for a compact footprint.



### Produce Lounge - 3600 x 1800

Contemporary produce lounge complete with hips/slopes and corner protection trims. Sturdy metal frame and plank effect timber panels.

Size: 3600mm x 1800mm

Product Code: 708-310

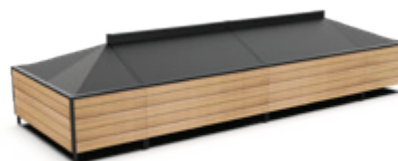
Also available as 3200mm x 1600mm for a compact footprint.

### Produce Lounge 5400 x 1800

Large, contemporary produce lounge complete with hips/slopes and corner protection trims. Sturdy metal frame and plank effect timber panels.

Size: 5400 x 1800mm

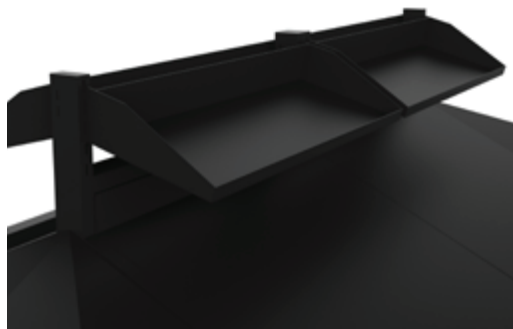
Product Code: TBA



Also available as 4800mm x 1600mm for a compact footprint.







### Upper Shelf Add On

An optional upper shelf that provides additional space for displaying smaller items or slow-moving lines. Also perfect for cross merchandising above the main lounge area.

Product Code: 1674 (900 W)  
Product Code: 1668 (1800W)



### Gantry Signage to Suit Single / Double Bays

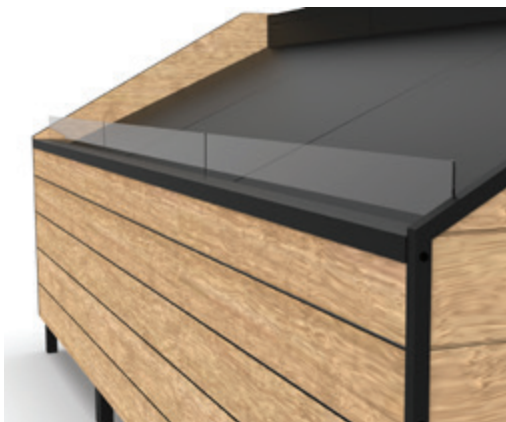
Custom gantry signage designed to suit single or double bay configurations, offering clear, elevated branding or category labelling.

Product Code: 708-091 (single bay)  
Product Code: 708-092 (double bay)

### Acrylic Front to Suit Lounges

Durable acrylic fronts that attach to the lounge face, helping contain and stack loose produce neatly and securely.

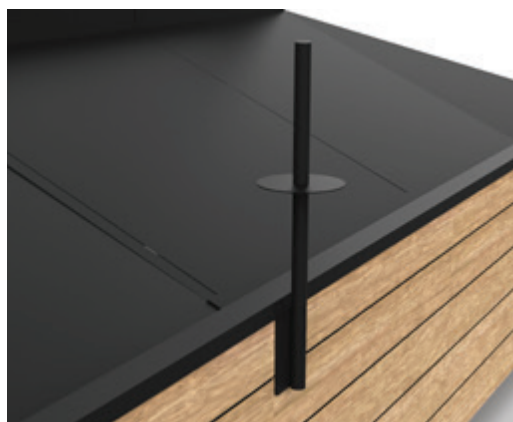
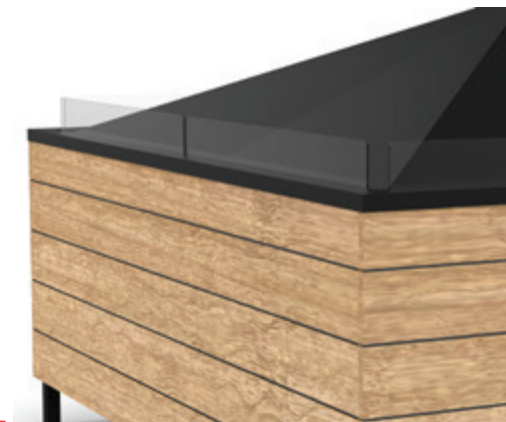
Product Code: 708-312



### Acrylic Front to Suit End Bays

Purpose-built for end bays, these clear acrylic fronts provide a neat, secure way to contain produce while enhancing visibility and presentation at the end of your display run.

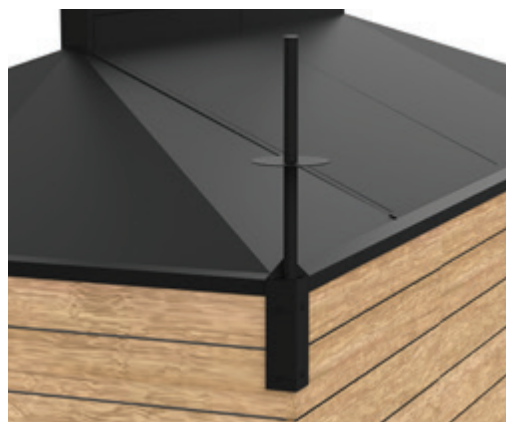
Product Code: 708-313 (1800 End Bay)  
Product Code: 708-314 (1600 End Bay)



### Bag Holder Side-Mount

Convenient side-mounted bag holder that keeps produce bags within easy reach for customers.

Size: 630mm (h)  
Product Code: 708-090



### Bag Holder Corner-Mounted

Space-efficient corner-mounted bag holder designed for accessibility without interrupting the display.

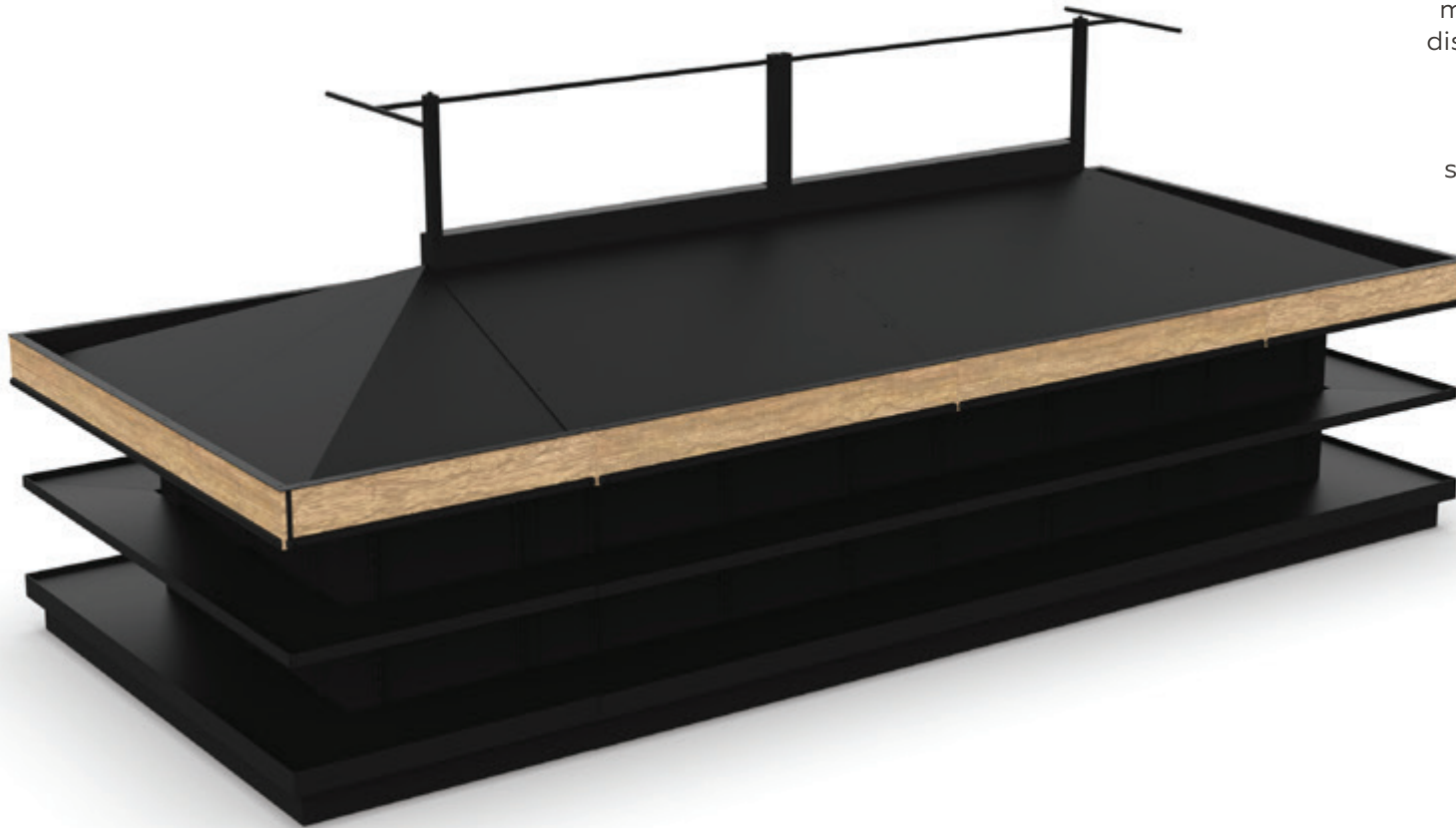
Size: 630mm (h)  
Product Code: 708-134





# PRODUCE LOUNGE GROCER STYLE

A premium, modern take on our classic produce lounges—designed with grocers and deli-style retailers in mind. This lounge features generous under-storage shelving with integrated lighting, making it perfect for high-volume displays while maintaining a clean, streamlined aesthetic. Built with a durable steel frame and finished in a warm, timber-look surface, it combines functionality with a market-fresh aesthetic that elevates your produce presentation.





### Grocer Style 3000x1800mm

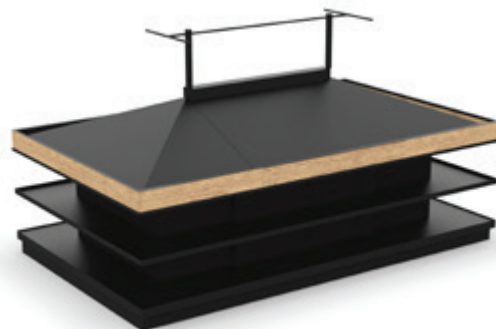
A compact layout with 2 centre lounges and 2 end lounges. Ideal for smaller spaces, with LED lighting and under-shelf storage.

Size: 3000 x 1800mm

Product Code: 2305(1200 Lounge with LED)

Product Code: 2306 (Lounge End with LED)

Sign Rails sold separately



### Grocer Style 4200x1800mm

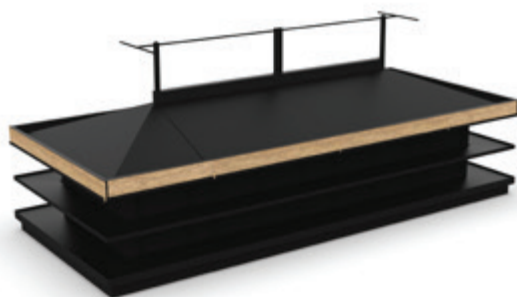
Mid-size setup with 4 centre lounges and 2 end lounges. Balances display capacity and footprint, with LED lighting.

Size: 4200 x 1800mm

Product Code: 2305(1200 Lounge with LED)

Product Code: 2306 (Lounge End with LED)

Sign Rails sold separately



### Grocer Style 5400x1800mm

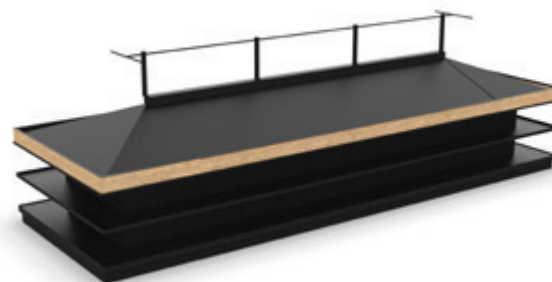
Large format with 6 centre lounges and 2 end lounges. Designed for high-volume displays, with LED lighting.

Size: 5400 x 1800mm

Product Code: 2305(1200 Lounge with LED)

Product Code: 2306 (Lounge End with LED)

Sign Rails sold separately

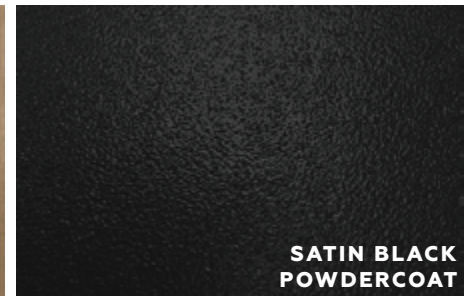




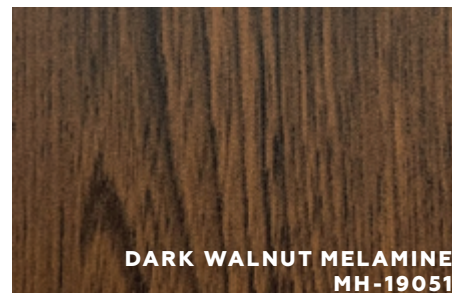


# PRODUCE BINS

## Standard Finishes Options:



## Made to Oder Finishes Options:





# ENDLESS COMBINATIONS

Our produce bins are designed for flexibility and style, offering a range of options from sleek metal frames to rustic bins with castor wheels, perfect for any store aesthetic. Whether you're looking for compact mobile displays, tiered setups, or bins that expand your display area, our range seamlessly blends function and visual appeal to enhance the presentation of your fresh produce.





### Orchard Bin

A large produce bin featuring castor wheels for mobility, finished with natural-look timber panels and a durable frame for a warm, market-inspired display.

Size: 1200 x 1200 x 900mm (h)  
Product Code: TBA

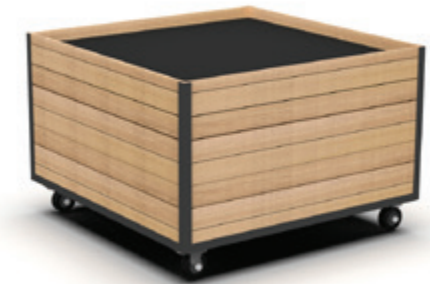


### Produce Bin Metal Frame

A produce bin that offers a more contemporary look with a sturdy steel frame and plank effect timber melamine panels.

Size: 900 x 900 x 900mm (h)  
Product Code: 708-124

Size: 700 x 700 x 900mm (h)  
Product Code: TBA



### Low Mobile Bin

Produce bin with angled display on castors. Designed to fit seamlessly into our metal shelving to create a compact produce display. This item is delivered fully assembled.

Size: 900 x 700 x 740mm (h)  
Product Code: 708-205 (Low Height)





### Produce Spillover Bin

The produce spillover bin allows you to extend your produce display and cross merchandise. Fits perfectly against a standard 900x900 produce bin.

Size: 900 x 450 x 900mm (h)  
Product Code: 708-125



### Stackable Spillover Bin

A versatile stackable bins that can be used to create a range of displays for produce or general groceries.

Size: 900 x 280 x 375mm (h)  
Product Code: 708-210

### Produce Bin Metal Frame - Half Low

A smaller produce bin that offers a more contemporary look with a sturdy steel frame and timber melamine panels. Pairs perfectly with our standard sized bins to create a tiered display.

Size: 900 x 450 x 900mm (h)  
Product Code: 708-229



# MODULAR SOLUTIONS MADE FOR RETAIL

Our add-on system is built for flexibility, allowing you to customise produce bins to suit your store layout. Convert standard bins into full produce lounges with slope and hip inserts, and enhance functionality with side or corner-mounted bag holders. This modular approach gives you the freedom to adapt and evolve your displays as your needs change.

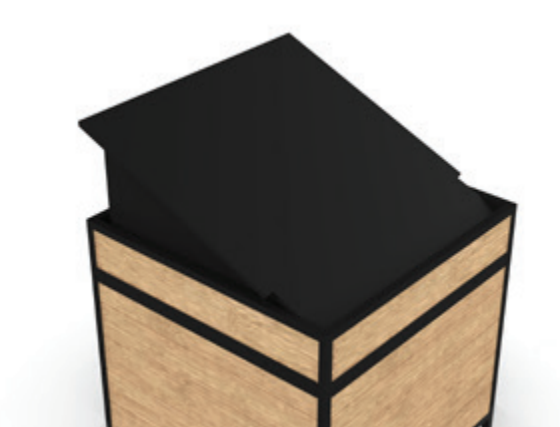




### Produce Bin Slope

A centre-piece add-on that creates a sloped display surface, converting standard produce bins into the central section of a complete produce lounge.

Size: To suit 900 x 900mm bin  
Product Code: 708-034



### Produce Bin Hip

Designed for end pieces, this contoured add-on gives produce bins a curved finish, completing the look and function of a full produce lounge.

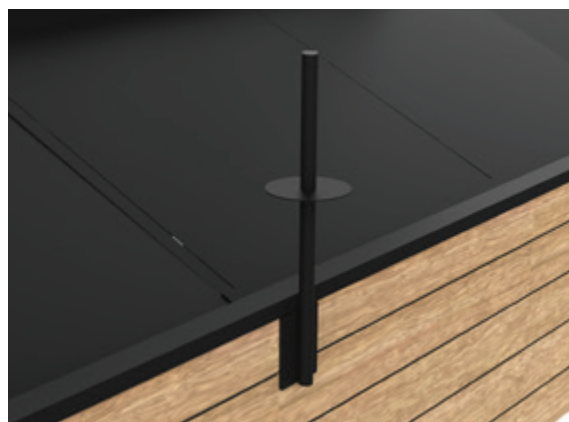
Size: to suit 900 x 900mm bin  
Product Code: 708-032 (LH)  
Product Code: 708-033 (RH)



### Bag Holder Side Mount

A convenient side-mounted accessory that keeps produce bags easily accessible for customers without interfering with your display layout.

Size: 630mm (h)  
Product Code: 708-090





# PRODUCE GONDOLA

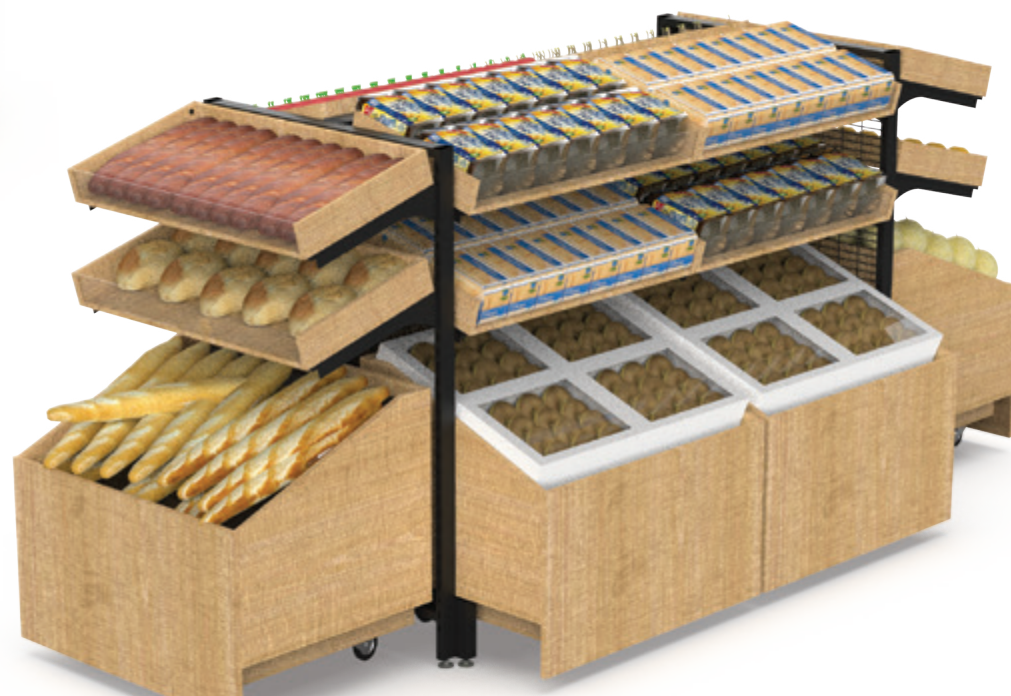
Our produce gondolas offer a compact footprint and modular design, perfect for fresh produce, bakery, or general grocery displays. Available in single- or double-sided configurations, they combine standard gondola shelving with crate shelves and low mobile bins to suit both wall placements and open floor plans.

Enhance your setup with accessories like feature end displays and acrylic tray fronts—designed to boost visibility, accessibility, and sales.



# FLEXIBILITY TO SUIT YOUR NEEDS

Our modular gondola systems are designed with adaptability in mind—ideal for fresh produce, bakery, or mixed grocery displays. With customisable configurations, they allow you to easily switch between stock types as your range evolves. Combine standard shelving with crate shelves, low bins, and accessories like feature ends or acrylic fronts to create a setup that grows and adapts with your store's needs.





### Single Sided Gondola

Create a flexible, space-saving produce display using standard gondola shelving combined with crate shelves and low mobile produce bins. The single-sided design is ideal for placing against walls or in tighter spaces, maximising your available footprint while maintaining a clean, organised presentation.

*Shown as 4 bay configuration*

### Feature End Display

An end-mounted add-on that enhances your gondola setup with additional display space, perfect for highlighting seasonal produce or promotional items.

Product Code: 708-117 (Crate Shelf)  
 Product Code: 708-114 (Feature End Frame)  
 Product Code: 708-118 (Bracket)  
 Product Code: 708-116 (Base Shelf)  
 Product Code: 708-115 (Base Frame Chrome)



### Double Sided Gondola

Maximise display capacity and accessibility with a double-sided produce setup. This island configuration features standard gondola shelving with crate shelves and low mobile produce bins on both sides—ideal for open floor plans and high-traffic areas where customers can browse from either direction.

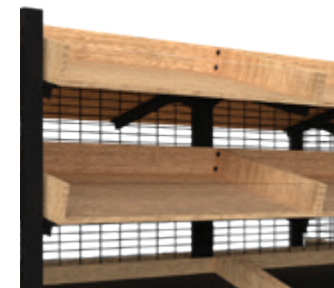
*Shown as 3 bay + 2 end configuration*



### Acrylic Tray Front

A clear acrylic front panel that enhances product visibility within tray displays, making it ideal for showcasing fresh produce in your gondola system.

Size: 912 x 470 x 98mm  
 Product Code: 708-2326





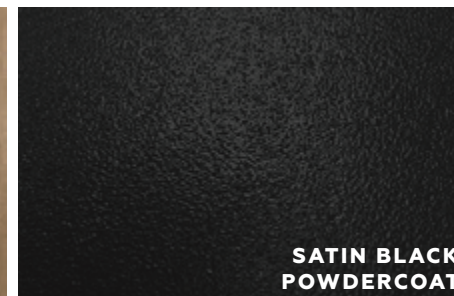
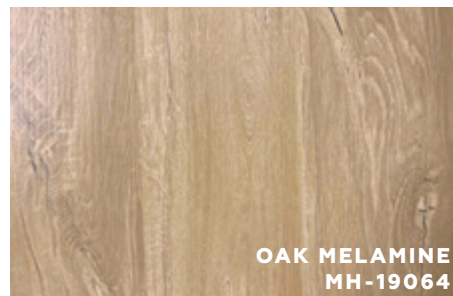




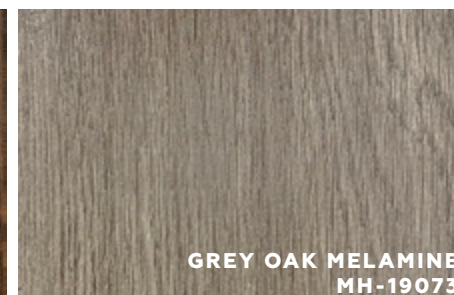
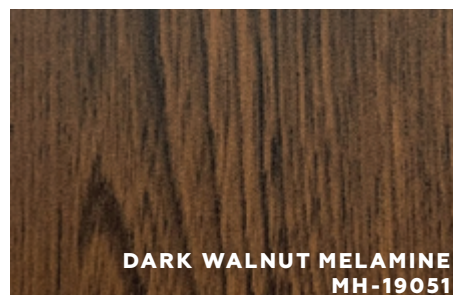


# PRODUCE TABLES

## Standard Finishes Options:



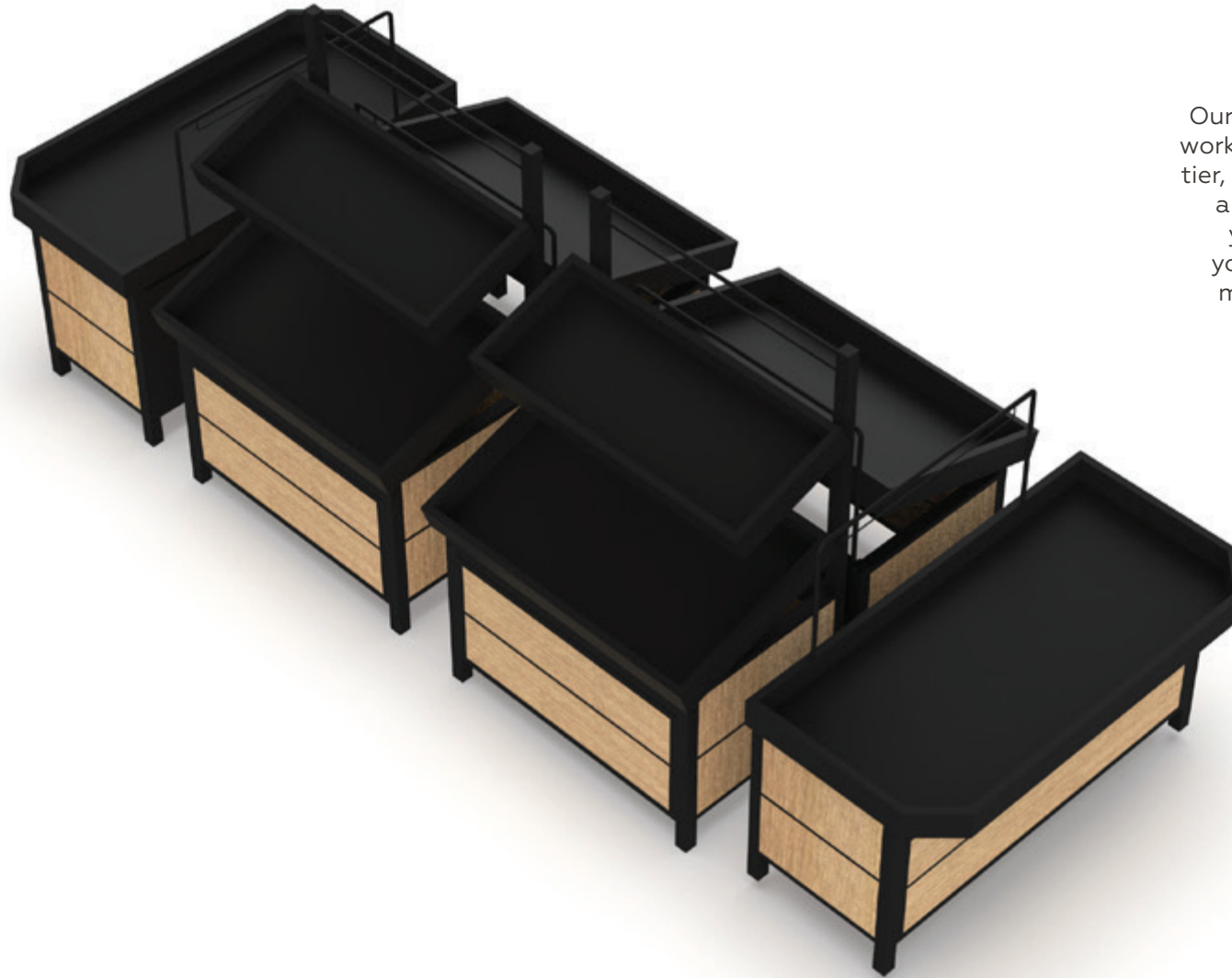
## Made to Order Finishes Options:





# VERSATILITY DESIGNED FOR YOUR STORE

Our range of produce tables is designed to work seamlessly together—combine single-tier, two-tier, and end bay options to create a cohesive, flexible display run that suits your space and shopping flow. Whether you're building a compact layout or a full market-style display, these tables adapt effortlessly to your store's needs.





### Produce Table - Single Tier

A versatile produce table with an adjustable display tray and signage gantry, available with castors for easy mobility.

Size: 1200 x 800 x 1250mm (h)  
Product Code: 702-085

### Produce Table - Two Tier

A space-efficient double-tier produce table featuring two adjustable display trays and castors for flexible positioning.

Size: 1200 x 800 x 1750mm (h)  
Product Code: 702-083



### Produce Table - End Bay

Specifically designed to finish off your produce run, this end bay table features an angled display tray and signage gantry, with castors for easy repositioning.

Size: 1600 x 800 x 1250mm (h)  
Product Code: 702-084

### Bag Holder for Produce Tables

A practical side-mounted bag holder designed specifically for produce tables, keeping bags accessible without compromising display space.

Product Code: 2541















*Have questions? We're happy to help!  
Contact us for more information, pricing,  
or to discuss your needs.*

**[www.gibsonretail.com.au](http://www.gibsonretail.com.au)**

**Head Office NSW**

4 Lidco St  
Arndell Park  
NSW 2148

Tel: 02 8724 4600  
Fax: 02 8724 4699

**VIC Office**

Level 7,  
570 St Kilda Rd  
Melbourne  
VIC 3004

Tel: 03 9545 3619

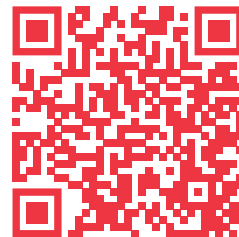
**Shanghai**

11F, Tower A,  
1308 Lianhua Rd  
Minhang District  
Shanghai China

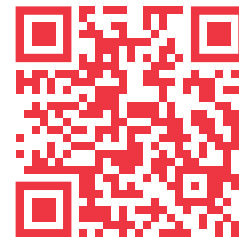
Tel: +86 21 5223 0161



**WEBSITE**



**LINKEDIN**



**FACEBOOK**



**INSTAGRAM**